



RECP #: 752641

RECORDED 5/8/2019 AT 1:10 PM BK# 2620 PG# 1683
Debra K. Lee, CLERK OF LARAMIE COUNTY, WY PAGE 1 OF 1

STATE OF WYOMING CORNER RECORD

(In compliance with the CORNER PERPETUATION AND FILING ACT, Wyoming Statutes, 1997 Section 33-29-140, et. seq., and the Rules and Regulations of the Board of Registrations for Professional Engineers and Professional Land Surveyors)

SOUTHEAST CORNER SECTION 12, T. 18 N., R. 64 W., 6TH P.M., LARAMIE COUNTY, WYOMING

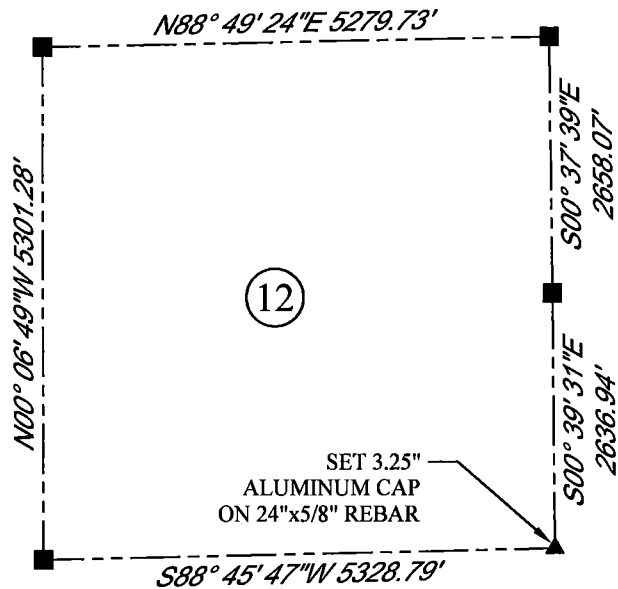
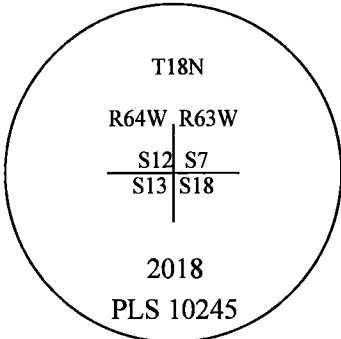
GLO: SET A GRANITE STONE 10X10X8, 6IN. DEEP WITH 4 MARKS ON THE SOUTH AND 2 ON THE NORTH EDGE, FOR CORNER TO SECTIONS 7, 12, 13, 18.

FOUND: NOTHING. SET ALUMINUM CAP AT PROPORTIONATE (SINGLE) DISTANCE.



SCALE: 1" = 2000'
NORTH DETERMINED BY
G.P.S OBSERVATIONS

SET 3.25" ALUMINUM CAP ON #5 REBAR, AT SURFACE MARKED AS SHOWN. PLACED A MOUND OF STONES ON N. AND W. SIDE, CORNER IS 98.6 FT SOUTH OF A NORTH AND EAST FENCE CORNER.



LEGEND:

- FOUND BLM CAP
- FOUND USFS CAP
- FOUND STONE
- FOUND PRIVATE MONUMENT
- ▲ CALCULATED POSITION
- ◆ SET MONUMENT (LS10245)
- SECTION LINE

DATE OF FIELD WORK: 9/25/2018 OFFICE REFERENCE: MERIDEN

CROSS INDEX DIAGRAM

	1	2	3	4	5	6	7	8	9	10	11	12	13	14	15	16	17	18	19	20	21	22	23	24	25	
A																										
B																										
C			6				5					4					3							2		1
D																										
E																										
F																										
G			7				8					9					10							11		12
H																										
J																										
K																										
L			18				17					16					15							14		13
M																										
N																										
O																										
P			19				20					21					22							23		24
Q																										
R																										
S																										
T			30				29					28					27							26		25
U																										
V																										
W																										
X			31				32					33					34							35		36
Y																										
Z																										
	1	2	3	4	5	6	7	8	9	10	11	12	13	14	15	16	17	18	19	20	21	22	23	24	25	

WOOD
2615 AVIATION DRIVE
SHERIDAN, WY 82801
PH: 307-675-6400



THIS CORNER RECORD WAS
PREPARED BY ME OR UNDER
MY DIRECTION AND
SUPERVISION,
SEAL AND SIGNATURE

